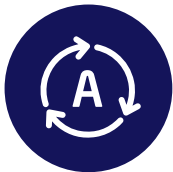
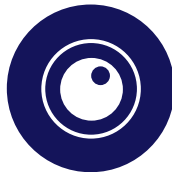


# OPTOMED AURORA<sup>®</sup> IQ

Handheld fundus camera



Autofocus and  
autoexposure



New high  
contrast optical  
design



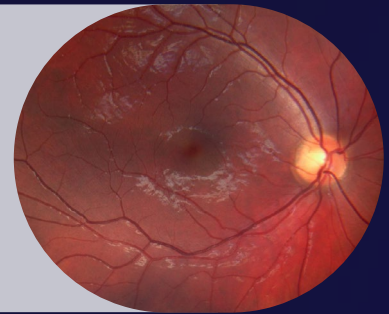
50 degrees field of  
view with non-myd  
operation



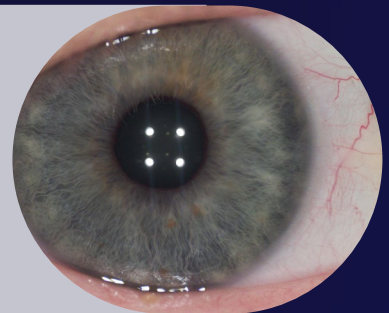
Cloud connectivity  
to optional  
AI service



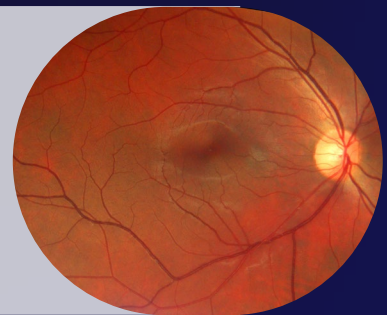
Handheld  
fundus camera



Eye surface  
imaging



Can be mounted  
to a slit lamp





## What Aurora IQ offers

### Image quality

- **50 degrees field of view** combined with **non-mydriatic operation** allow a detailed examination and ease of use in various use cases.
- **New high contrast optical design** helps to detect small early phase retinal changes.

### Intelligent features

- **Autofocus and autoexposure** allow quick usage of the camera without any setting modifications in various use cases.
- **Integrated image quality analysis** guides first time users to acquire successful images and therefore minimizes training time.
- **Pin code protection** can be used for ensuring data safety.

### Connectivity

- **WLAN and USB connections for image transfer** and various ways of handling image data are supported by the camera.
- **Integrated Cloud connection** allows sending images to an optional AI service for image analysis.

# Technical specification

<b>TYPE</b>	Non-mydratiatic digital fundus camera
<b>FIELD OF VIEW</b>	50 degrees (total FOV 50x40)
<b>CAMERA SENSOR RESOLUTION</b>	5 Mpix
<b>OPTICAL RESOLUTION</b>	> 60 lp/mm (ISO10940:2009)
<b>FIXATION TARGETS</b>	9 internal fixation targets for peripheral imaging
<b>FOCUS RANGE</b>	Autofocus, -20D to +20D
<b>MINIMUM PUPIL SIZE</b>	3.1 mm
<b>IMAGE FORMAT</b>	JPEG
<b>VIDEO FORMAT</b>	MPEG-4
<b>DISPLAY</b>	TFT-LCD: 4", 800x480
<b>MEMORY</b>	8GB
<b>BATTERY</b>	Rechargeable 3.63V/2600mAh Li-ion Battery
<b>CONNECTIVITY</b>	WLAN, USB
<b>TYPE OF PHOTOGRAPHY</b>	Color, Red-free, IR
<b>DIMENSIONS AND WEIGHT:</b>	
<b>Aurora camera</b>	122(w) x 202(h) x 98 (l) mm, 526g
<b>Aurora retinal module</b>	68 (w) x 74 (h) x 160 (l) mm, 327g
<b>Aurora anterior module</b>	71 (w) x 80 (h) x 79 (l) mm, 105g
<b>WARRANTY</b>	2 years excluding batteries

**OPTOMED**

Optomed Plc | Yrttpellontie 1, 90230 Oulu, Finland  
Tel. +358 20 741 3380 | sales@optomed.com | www.optomed.com

