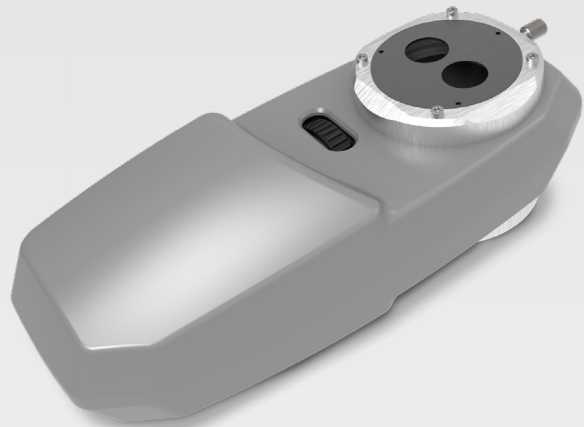


# DEDICATED DRY EYE PLATFORM

Integrated and easy to use  
diagnostic platform

## TURN YOUR SLIT LAMP INTO A COMPLETE DRY EYE ASSESSMENT TEST



January 2021  
ver. 1 - 2021



# SLIT LAMP IMAGING MODULE



DSLC200 is the new slit lamp imaging system. Thanks to its high optical quality it provides amazing images and videos. The 3.1 MP camera with 1/1.8" sensor and high-quality optical image splitter offer incredible results.

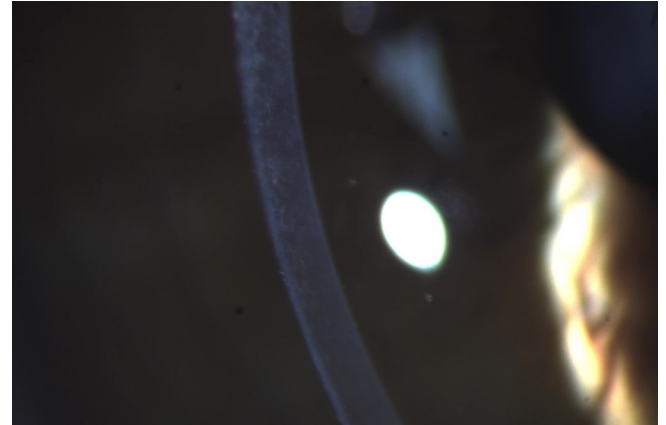
The optical system has an adjustable focus distance to be set according to your needs. The optical module can be mounted on most of the slit lamps available on the market such as CSO, Zeiss, Nidek, Topcon, Takagi, Righton, Keeler, Huvitz, Mediworks, Shin Nippon.

DSLC200 can transform your slit lamp into a high quality digital slit-lamp!

The device is not mounted on the eyepiece as all after-market cameras use to but uses a real image splitter fitted between eyepieces and magnification optics of your Slit Lamp providing not only the best possible quality of image but allows the user to use the eyepieces normally.

## BEAM SPLITTER AND VIDEO ADAPTER

Made to be used with the high quality SBM digital camera to most slit lamps.



# IMPROVE YOUR SLIT LAMP

## SAVING PHOTOS AND VIDEO IN SBM SOFTWARE

A database system is supplied with the device to manage patients and exams in the simplest and most comfortable way. The SBM software can manage the focus and light source and get amazing quality images and videos.

### Camera

The camera is designed to provide a continuous connection of the high quality video signal. The camera automatically adjusts itself to changes in the slit lamp illumination.

### Digital conversion of the video signal

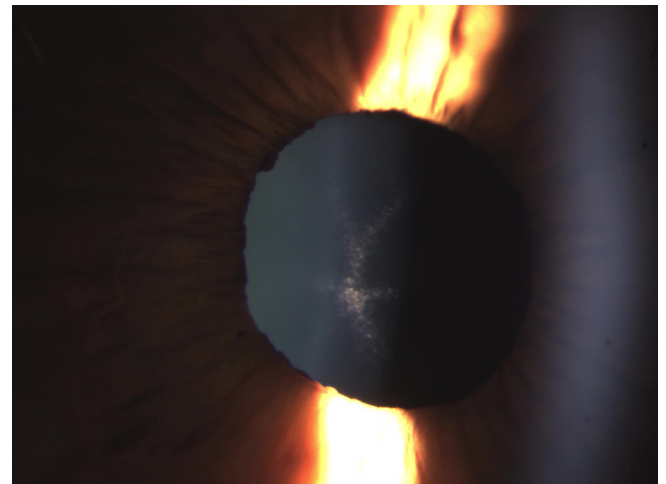
The video signal from the camera is fed into the imaging systems PC via a SuperSpeed USB 3.0 cable connection.

## PRODUCTION

SBM Sistemi is now adapting customized solutions of imaging systems on slit lamps from various manufacturers, thanks to the experience gained in the instrumental, optical and digital fields.

## ASSESSMENT OF DRY EYE

The DSLC200 device can also be used in combination with the DEM100 and is adaptable to your Slit Lamp System. The devices can be installed in less than 5 minutes on your HS style lamp and transform it into a complete and unique diagnostic tool for dry eye. The software will guide you in the dry eye examination and all software automations are provided to obtain reliable and complete objective results.



# INTEGRATE YOUR SLIT LAMP WITH DRY EYE MODULE DEM 100

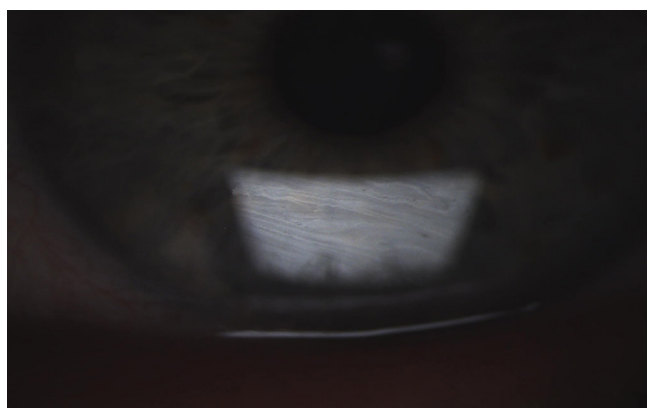


Switch your slit lamp into a complete dry eye assessment test. The new DEM 100 fitting on any slit lamp Haag-Streit style allows a complete Tear Film automated digital analysis.

## AUTO INTERFEROMETRY

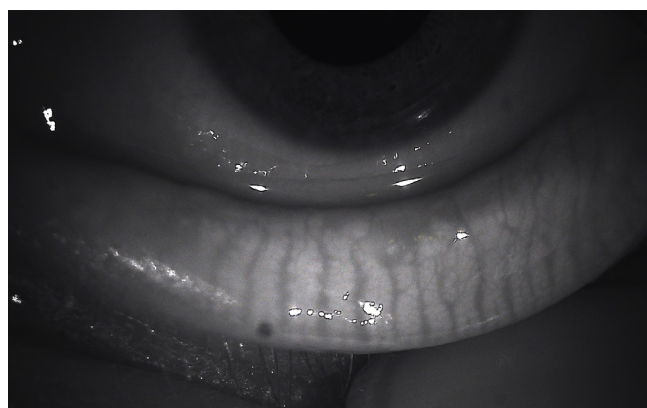
The software automatically evaluates the quantity and quality of the lipid component on the tear film.

The device highlights the lipid layer and the software analyses automatically Lipid Layer Thickness (LLT).



## MEIBOGRAPHY

Meibography is the visualization of the glands through illumination of the eyelid with infrared light. It images the morphology of the glands in order to diagnose any meibomian gland drop out which would lead to tear dysfunction.

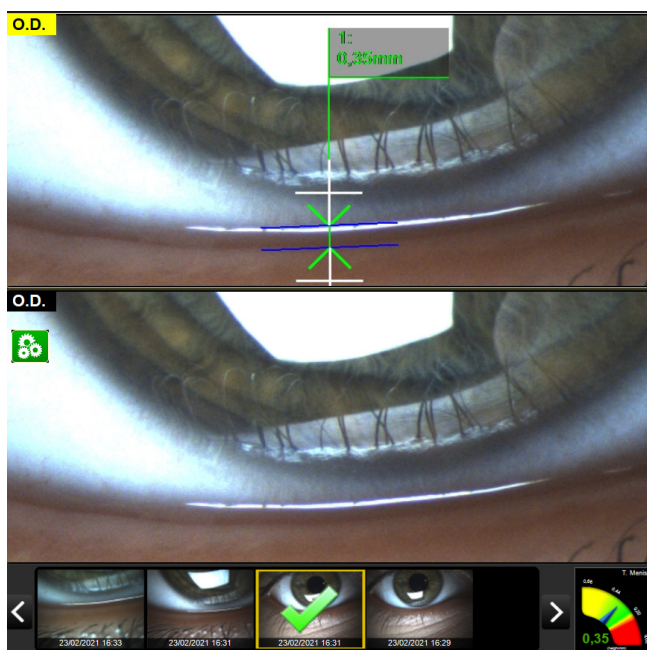


## 3D MEIBOGRAPHY

This new imaging system provides strong evidence to support the choice of a specific therapy (for example IPL treatment) and helps the patient to understand why a certain therapy is being recommended.

## TEAR MENISCUS

The thickness of the tear meniscus that is observed on the eyelid margins provides useful information on the tear volume. The tear meniscus can be examined considering its height, regularity and shape.



## BLINK QUALITY

It has been established that efficient blinking plays an important role in ocular surface health during contact lens wear and that it improves contact lens performance and comfort.

# WHAT DOES A SLIT LAMP NEED MORE?

## SWITCH YOUR SLIT LAMP INTO A COMPLETE DRY EYE ASSESSMENT TEST

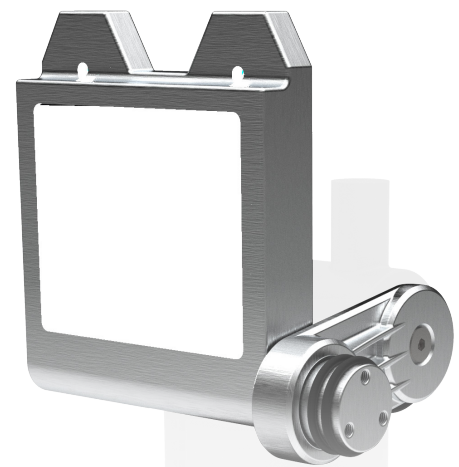
- IR illumination for Meibomian glands imaging
- An illumination module to light up and evaluate Lipid Layer secretion
- Integrate software analysis for blinking
- Evaluate Tear Meniscus Height digitally
- Easy and friendly software interface TOTALLY DEDICATED TO DRY EYE
- Integration of our TREATMENT PROTOCOL developed by our international KOL to help users in data interpretation and treatment selection
- DEM 100 foldable system allows slit lamp use without any interference

### EXAMS AVAILABLE WITH DEM100 DEVICE:

- Lipid Layer Thickness (mandatory)
- Meibography
- Tear meniscus Height
- Automatic detection of Blinking motion

### TECHNICAL DATA

- Image resolution: up to 3,1 MP 1/1,8" sensor
- Acquisition mode: Single pictures, Multi shot, video
- Focus: Manual
- ISO management: Electronic
- Connection: USB 3.0 SuperSpeed



[www.sbmsistemi.com](http://www.sbmsistemi.com)

Strada Torino, 43 - 10043 Orbassano (Torino) Italy  
Tel. +39.011.19923378 - [info@sbmsistemi.com](mailto:info@sbmsistemi.com)