



optovue®  
Your OCT specialist

Visualize. Analyze. Personalize.  
*OCT + OCTA*

AngioVue™  
IMAGING SYSTEM

Optovue is solely dedicated to advancing optical coherence tomography (OCT) for the early detection and diagnosis of sight-threatening diseases.

Over the past decade, and in collaboration with industry-leading ophthalmic specialists, Optovue has pursued a single-minded vision to improve the eye health of patients around the world.

From the first Spectral-Domain OCT to today's OCT angiography (OCTA) platform, Optovue has remained focused on furthering OCT image quality, efficiency and clinical applications that enable you to elevate your level of care.

**Come and join us in our shared purpose.**

The AngioVue™ Imaging System is pending 510(k) clearance in the U.S.

AngioAnalytics™ is not cleared by the FDA for sale in the U.S.

# Introducing the AngioVue Imaging System

The **AngioVue™ Imaging System**, installed in more than 450 ophthalmic practices worldwide, is a dual-modality system capable of imaging both structure and function of the ocular microvasculature.

AngioVue provides detailed visualization of the **individual layers of retinal vasculature** to enable personalized management of disease progression non-invasively, without the use of dye, and with image acquisition in under three seconds.

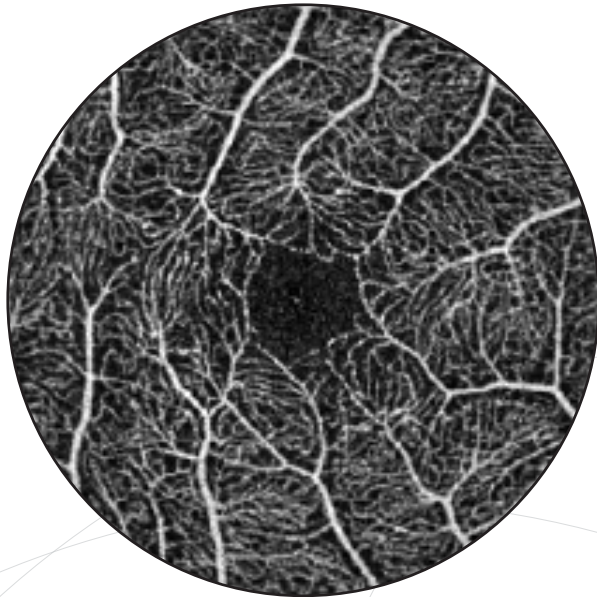
**AngioAnalytics™**, the world's only OCT angiography-based quantification of ocular blood flow, tracks disease by providing objective measures of areas of flow, non-flow and flow density.

**AngioMontage™** provides the first widefield view of retinal microvasculature to enable earlier detection and management of disease.

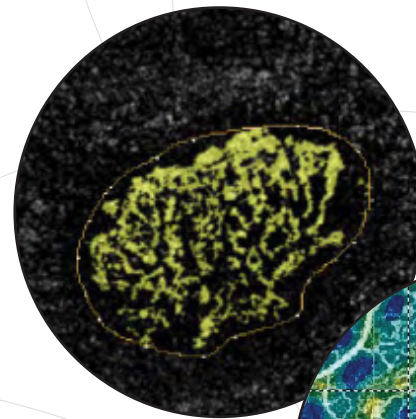


# Visualize. Analyze. Personalize.

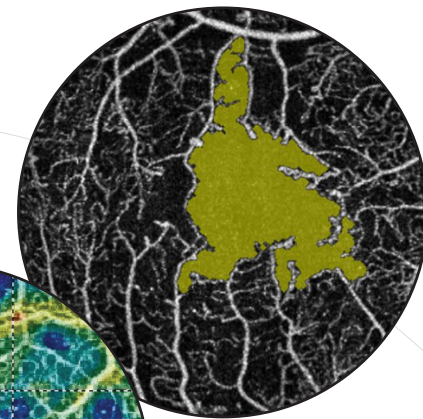
**Visualize** microvascular blood flow non-invasively in less than three seconds.



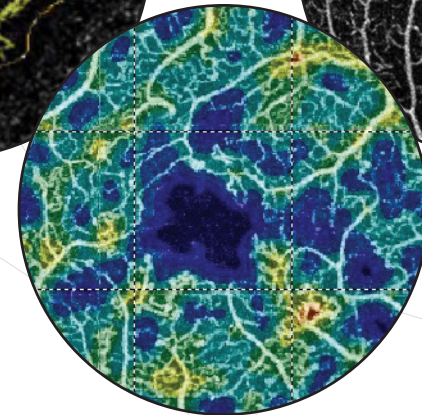
**Analyze** areas of flow, non-flow, and flow density quantitatively to track disease



Flow Area

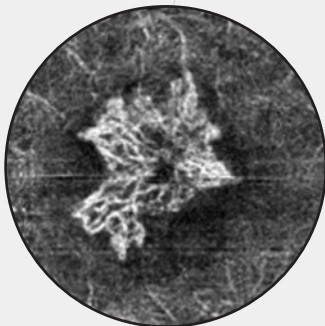


Non-Flow Area



Flow Density

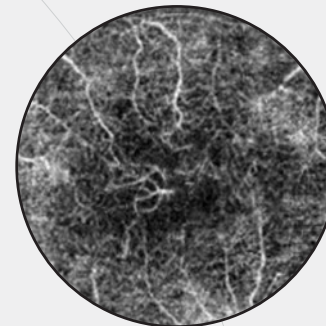
**Personalize** patient care with novel real-time information that aids in treatment decisions



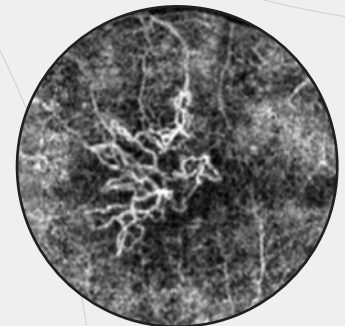
Baseline



24 hours post-injection



7 days post-injection



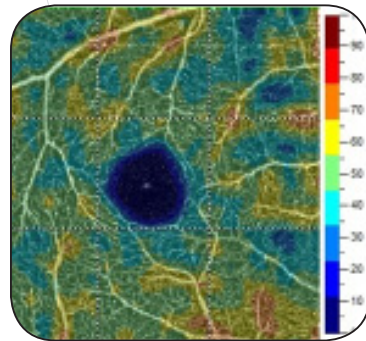
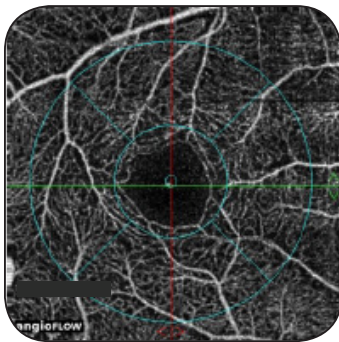
30 days post-injection

# Structure and Function

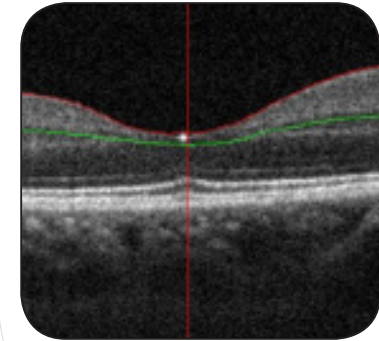
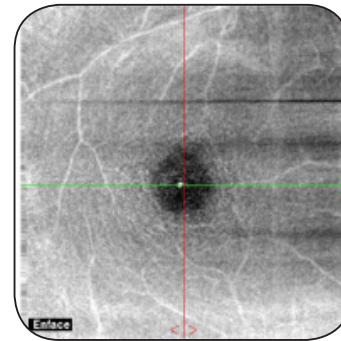
## Visualization and Quantification

AngioVue combines structural OCT data with new vascular imaging and quantification information to provide a comprehensive presentation of retinal health with a single imaging platform.

Function

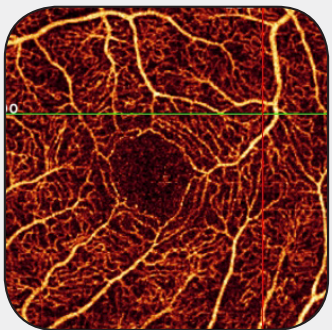


Structure

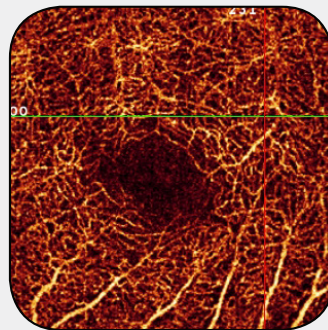


## Automatic Segmentation of Retinal Layers

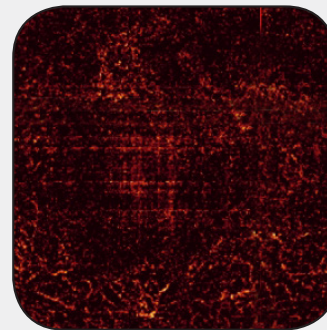
AngioVue images are 3-dimensional and depth-resolved, so for the first time, physicians can isolate layers of interest for detailed visualization and analysis of retinal pathology.



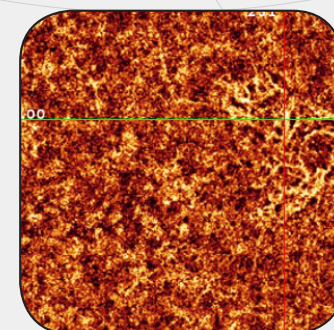
Superficial Capillary Plexus



Deep Capillary Plexus



Outer Retina



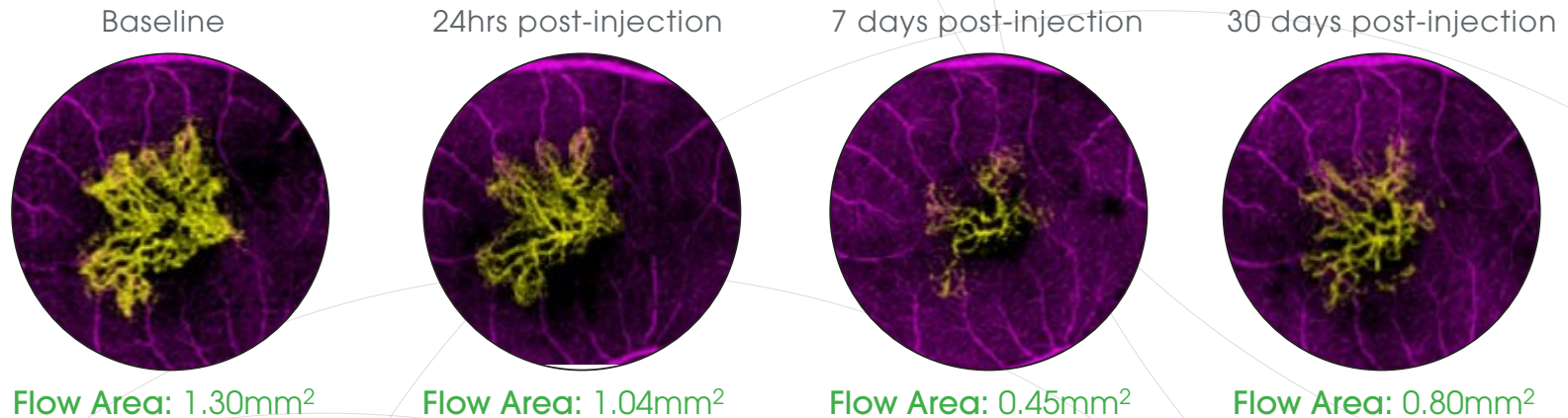
Choriocapillaris

# AngioAnalytics™

The world's first **OCTA quantification** enables the measurement of flow, non-flow and flow density to objectively track disease.

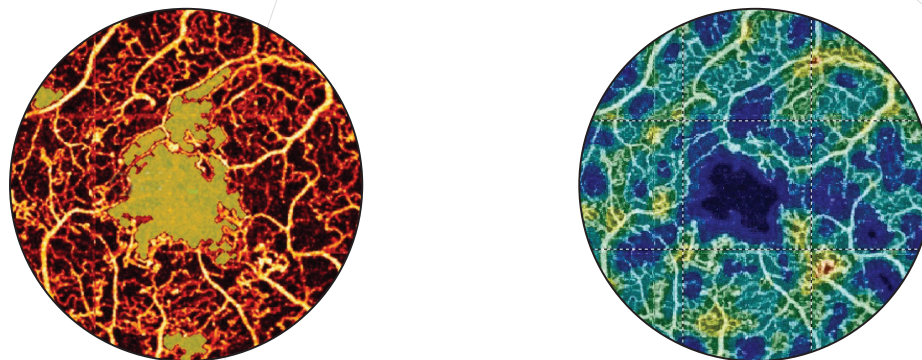
## AGE-RELATED MACULAR DEGENERATION

Objectively measure response to injected therapy:



## DIABETIC RETINOPATHY

Quantitatively track disease progression:



Non-Flow Area: 0.816mm<sup>2</sup>

Flow Density Map

OCT Thickness ILM-IPL	
Section	Thickness (µm)
ParaFovea	159
- Superior-Hemi	158
- InferiorHemi	160

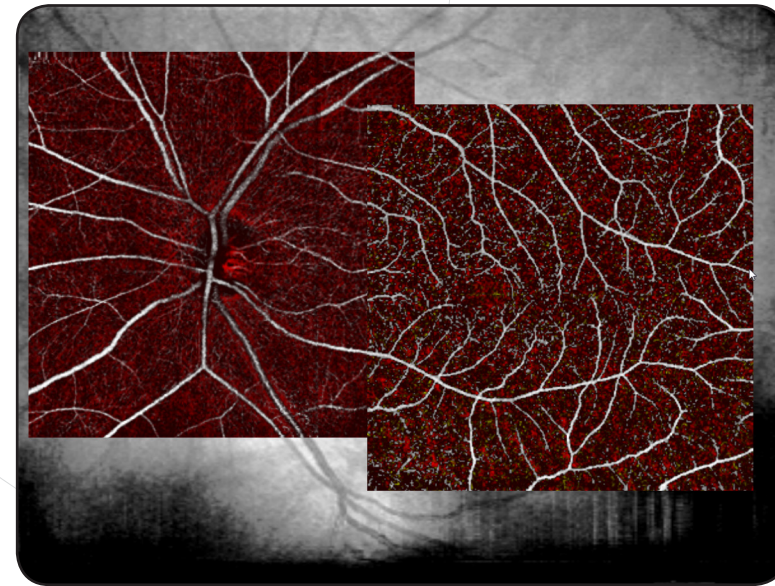
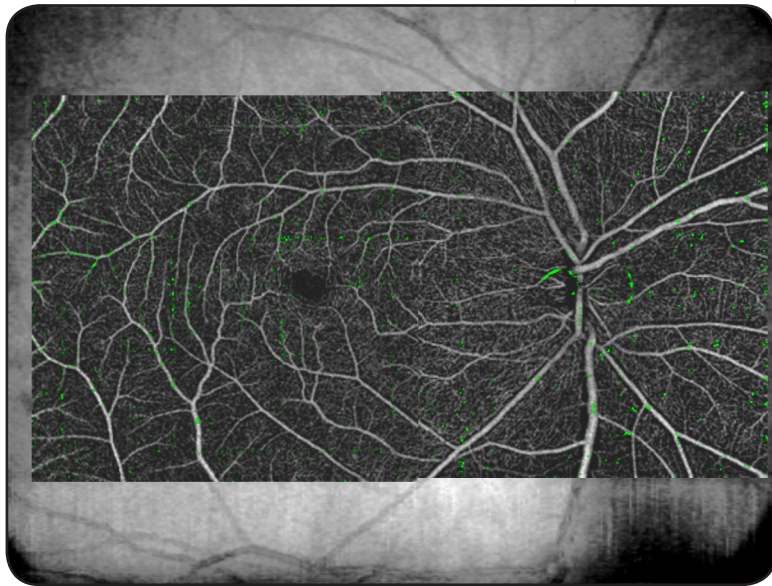
  

OCT Thickness ILM-RPE & Flow Density		
Section	Thickness (µm)	Density (%)
Whole en face	N/A	40.05
Fovea	365	25.02
ParaFovea	427	41.02
- Tempo	441	40.72
- Superior	426	40.21
- Nasal	405	38.99
- Inferior	437	44.15

Flow Density Quantification

# AngioMontage

AngioMontage combines two 6x6mm scan images to create a **wider field of view** that improves visualization of abnormalities in the retinal vasculature. This unprecedented display of microvasculature enables assessment of the **essential part of the retina** to aid in the early diagnosis and management of sight-threatening diseases.



Montage review screen showing angioretina and angiodisc overlaid on a widefield en face OCT scan. AngioMontage images may be viewed in black and white or layer-based color.

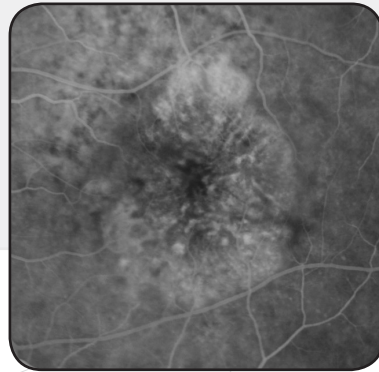
# AngioVue Clinical Applications

## Choroidal Neovascularization

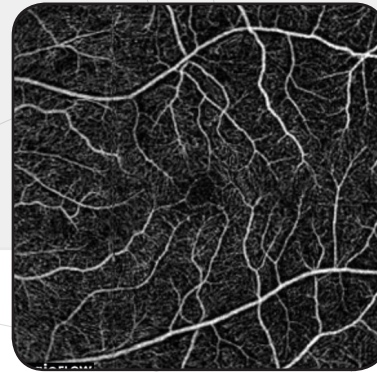
### Fluorescein Angiography

### AngioVue

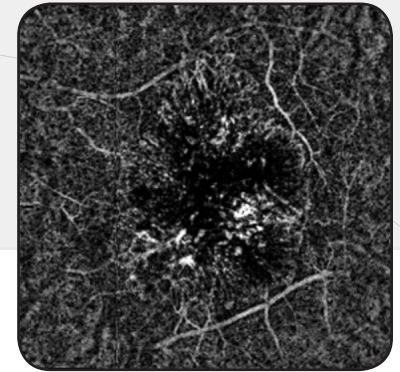
Case 1



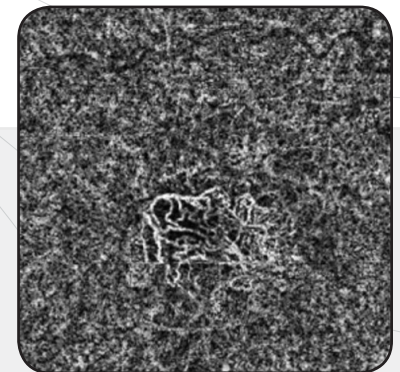
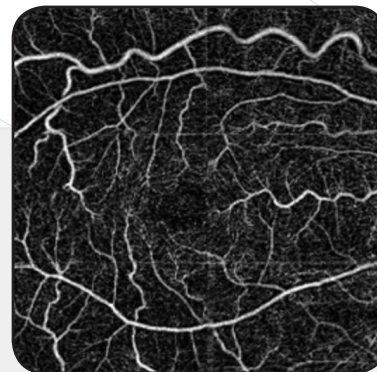
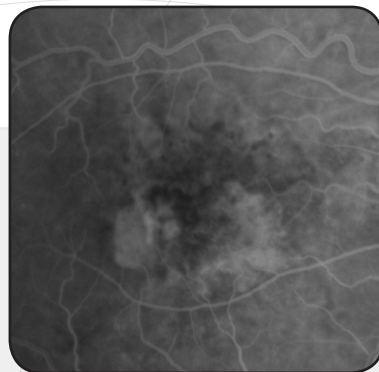
Superficial Capillary Plexus



Choriocapillaris



Case 2



The FA image shows retinal vascular structure and hyperfluorescence pattern typical of CNV.

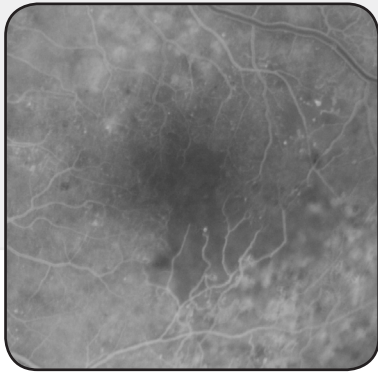
The OCTA en face image of the superficial plexus shows the retinal vascular structure while the OCTA en face image of the choroid shows the CNV vessel network surrounded by choriocapillaris.



# AngioVue Clinical Applications

Diabetic Retinopathy

## Fluorescein Angiography



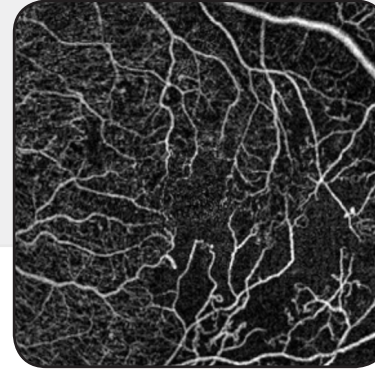
Vascular structure and regions of perfusion are visualized in both the FA and OCTA images. Microaneurysms are visible in both images.



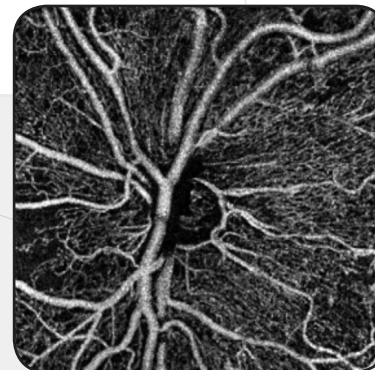
Radial peripapillary capillaries are visualized in all regions of the OCTA en face image and are difficult to see in the FA image.

## AngioVue

Superficial Capillary Plexus



Macula



Optic Disc

# AngioVue Technology

AngioVue incorporates four essential technologies to create stunningly detailed images with minimal acquisition and processing time, making it ideal for busy clinical practices

## SSADA: Split-Spectrum Amplitude Decorrelation Angiograph

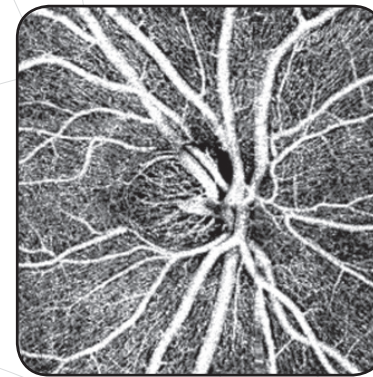
*SSADA was developed by David Huang at Oregon Health Sciences*

SSADA is a proprietary algorithm used to detect motion in the vessels.

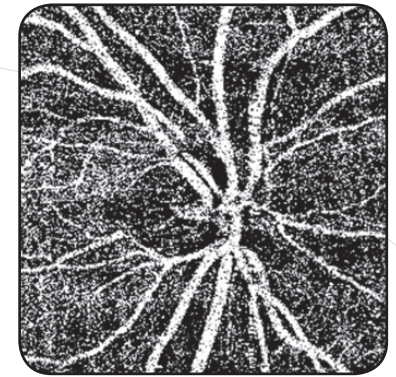
It acquires sequential OCT b-scans at a single cross-section of the retina and compares the scans against one another. The differences between scans indicate the presence of flow.

This unique technology elevates image quality by optimizing signal-to-noise ratio while minimizing scan acquisition time.

With SSADA



Without SSADA

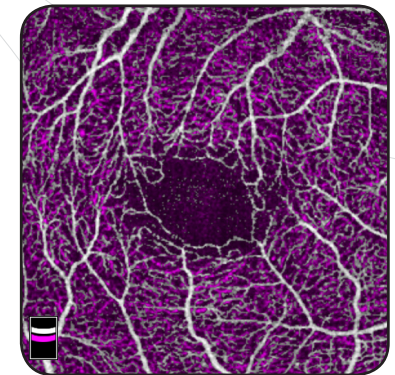
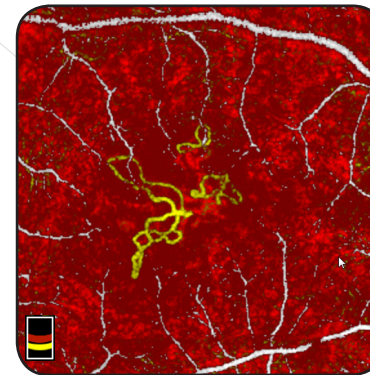


SSADA images display less noise and a more continuous microvascular network

## En Face Visualization

AngioVue images are three-dimensional and depth-resolved to enable assessment of individual layers of retinal vasculature.

En face colorization uses a standard color scheme to allow the clinician to identify different retinal layers of interest. The en face layer indicator provides a reference to the retinal layers displayed.



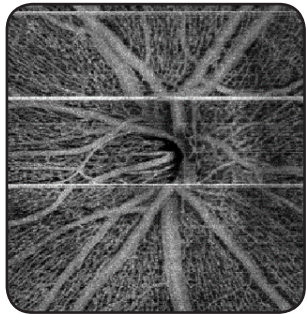
Red: Choriocapillaris    White: Superficial Capillary Plexus  
Yellow: Outer Retina    Purple: Deep Capillary Plexus

# AngioVue Technology

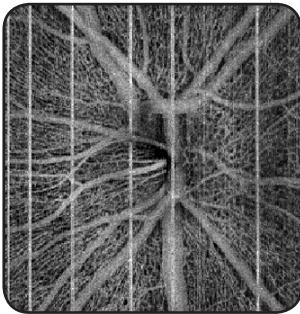
## MCT™: Motion Correction Technology

*Developed by MIT and the University of Erlangen*

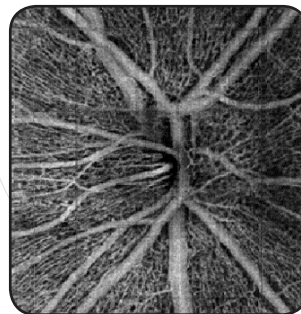
Fast X Scan



Fast Y Scan



MCT Scan

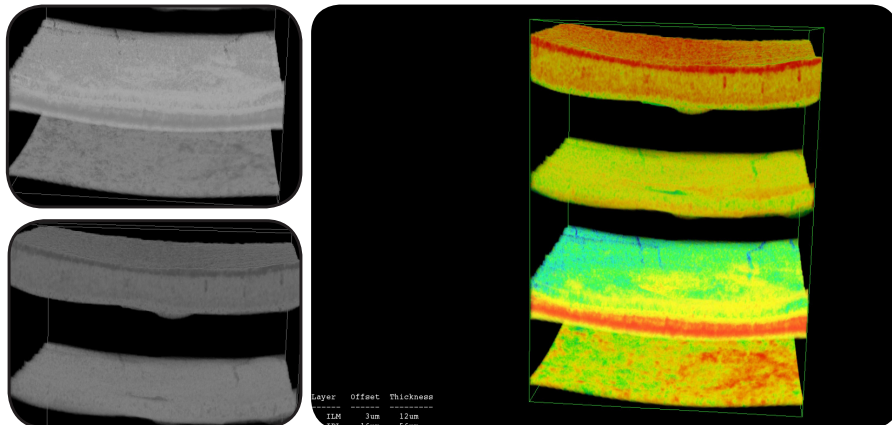


MCT corrects residual eye motion artifacts and increases the image intensity. Unlike other motion-correcting technologies, MCT is done as part of the post-scan processing and eliminates the need to re-scan the patient when motion is present.

The MCT employs two 3D raster scans: one horizontal and one vertical. The two scans are then merged to remove motion caused by artifacts.

## CUDA Parallel Computing Platform

### Dramatically Reduced Processing Time



CUDA dramatically reduces the computation time needed to process images and correct motion artifacts after scan acquisition, making it easy to integrate OCTA imaging into the practice workflow. With CUDA, images load in seconds, not minutes.

# Technical Specifications

OCT scanning speed	70,000 A-scans per second
Optical axial resolution	~5 microns (digital pixel sampling = 3 $\mu$ m)
Optical transverse resolution	~15 microns
OCT axial imaging depth	2 to 3 mm (dependent on scan protocol)
AngioVue imaging volume	304 x 304 A-lines (2 repeats / B-scan)
Total A-scans per volume	~209,000 A-lines (including flyback)
Acquisition time per imaging volume	(209K / 70K) ~3 seconds
AngioVue imaging size (retina)	3x3, 6x6
AngioVue imaging size (optic disc)	3x3, 4.5x4.5 mm



The AngioVue™ Imaging System is pending 510(k) clearance in the U.S.  
AngioAnalytics™ is not cleared by the FDA for sale in the U.S.

## Optovue, Inc.

2800 Bayview Drive  
Fremont, CA 94538  
Phone: 510.623.8868  
[www.optovue.com](http://www.optovue.com)

**optovue**<sup>®</sup>  
Your OCT specialist  
PN 301-50905 Rev. A